



UKRI Mental Health Platform Newsletter

Issue 2

May 2025

Industry Forum

6th May 2025



The MHP Industry Alliance Forum, held in partnership with [DATAMIND](#) and the [Medicines Discovery Catapult](#), brought together researchers, industry leaders, individuals with lived experience of severe mental illness, and members from NIHR and the Office of Life Sciences. [Click the links below to read blogs about the event, written in collaboration with DATAMIND:](#)

[Lisa gives a lived experience perspective](#)

[Marcos gives a researcher's perspective](#)

Meet the Researcher

Sally Ohlsen is a registered senior occupational therapist, specialising in early-intervention mental health services. She is now a research fellow at the MHP Complex Emotions Hub in Sheffield.

In her blog, Sally tells us about her collaborative work in the Hub.

"Being part of a research team that includes both academic experts and those with lived experience, I feel a genuine sense of hope that we can make meaningful progress in understanding these challenges and improving outcomes for individuals affected by them"

[Read the full blog on our website](#)

Mental Health Platform Research Summit 2025

10th October
Edinburgh

Plus: ECR Workshop
9th October



Mark your diary

On World Mental Health Day 2025, researchers can join us at this all-day event, held in partnership with MQ in Edinburgh. [Add Research Summit to calendar](#)

An ECR workshop will be held on the 9th October 2025 afternoon [Add ECR workshop to calendar](#)

More information available soon.



UKRI Mental Health Platform Newsletter

Issue 2

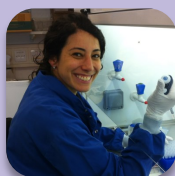
May 2025

Mental Health Awareness Week

12th—18th May 2025

The theme of Mental Health Awareness Week this year was “community”, so we spoke to some members of our MHP community to learn more about differences between general mental health and SMI, and why it’s important we research both.

[Read our full blog post here](#)



“ Researching both severe and general mental illness... will help us develop better medications, therapies and support systems tailored to these conditions. ”

Livia Carvalho: Senior Lecturer in Neuropsychopharmacology, co-Deputy Director of the Social Health Hub.



“ If one can control and relieve [severe mental illness], then a person is free to contribute, help, live and love. That is very positive for them and society as a whole. ”

Oliver Seligman: author, speaker and mental health advocate, has lived with Bipolar disorder for over 30 years.



“ It is critical that we develop a better understanding of the mechanisms of SMI, so that we can . . . improve the outcomes and life expectancies of the many millions affected globally ”

Andrew McIntosh: clinician and researcher at University of Edinburgh, MHP Director.

MHP News In Brief

- ⇒ Recruitment opens for METPSY: a new clinical research study at **Metabolic Psychiatry Hub**, based at the University of Edinburgh. [Read more](#)
- ⇒ Prof Jennifer Lau, hub lead from **Social Health Hub** co-authored an article this year describing social health as a third pillar of health alongside physical and mental. [Read more](#)
- ⇒ The MQ **DATAMIND** Data Science meeting took place in London in May, with topics including AI and polypharmacy. [Read more](#)

If you have something you think we should feature in the MHP newsletter, get in touch: mhp@ed.ac.uk

Opportunities

Early Career Researchers are encouraged to plan projects for our MHP ECR Fellowships. Applications for Round 2 will open 1st August [More information on our website.](#)

Industry Partners can join the Industry Alliance when the call opens in June. The next Industry forum led by DATAMIND will focus on Digital, Data and AI. [More information on our website.](#)

We are developing our **PPIE Network**. **People with lived experience** will continue to receive updates through these newsletters, and can expect more opportunities through the mailing list as we progress.

